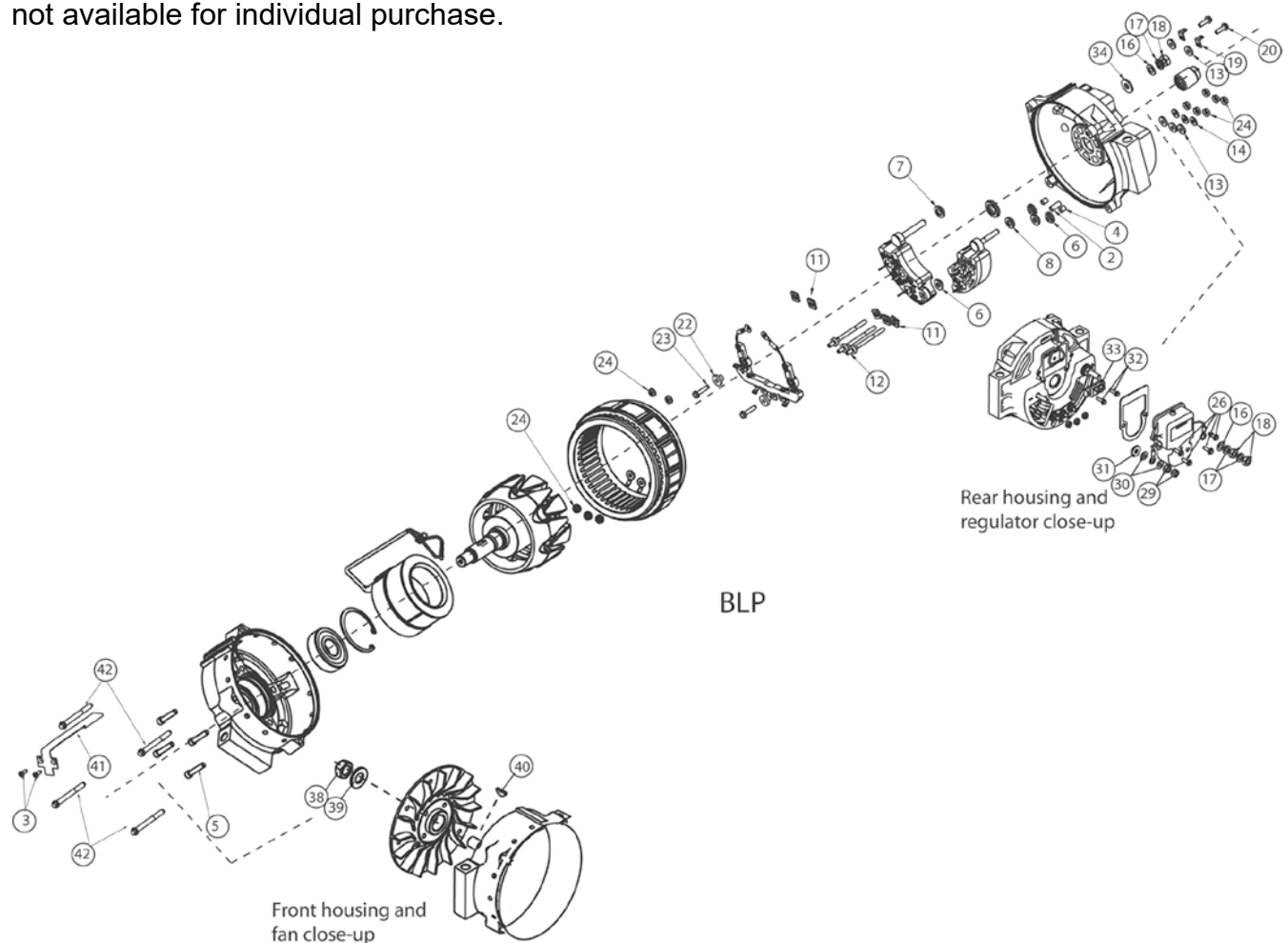


Source: Leece-Neville Heavy Duty Systems Division - Arcade, NY USA
Date: JULY 7, 2017
Bulletin No: TSB-3001
Models: All Brushless Padmount (BLP series) alternators
Subject: Hardware service kit K212104260S

All of the numbered components are part of the hardware kit and not available for individual purchase.



See page 2 for key descriptions and usage

Important: The information contained in this bulletin is intended for use by trained, professional technicians who have the proper tools, equipment, and training to perform the required maintenance described above. This information is NOT intended for 'do-it-yourselfers'; and you should not assume that this information applies to your equipment. If you have any questions regarding this information please visit our website at www.prestolite.com, or contact our technical service department at:

Date: JULY 7, 2017

Bulletin No: TSB-3001

Note: All of these components are part of the hardware kit and not available for individual purchase.

Description	Qty.	Find No.	Where used
INSULATOR SLEEVE	1	2	Black, center AC tap. Insulate AC tap from housing and rectifier.
SCREW, #8-32X.5 -FLAT	2	3	Attaches external field wire cover to front housing.
INSULATOR SLEEVE	2	4	Clear, two outer AC taps. Insulate AC taps from rear housing.
SCREW,SH-CAP,1/4X1-1/8	4	5	Attaches field coil to front housing.
WSHR INSL #10 BOLT	4	6	4 used AC taps rear rectifier internal.
WSHR INSL 5/16.09THX.8	1	6	Internal red negative post insulator
WSHR INSL 5/16.09THX.8	1	7	Internal red positive post insulator
WSHR INSL 1/4 BOLT	1	8	Internal negative post insulator
INSULATOR	5	11	3 internal between lead frame and rectifier. 2 internal at outmost AC taps between rectifier and lead frame
AC TAPS	3	12	AC taps
WSHR INSL #10.09THX9/1	5	13	Fiber washer insulator on external 3 AC taps and 2 internal on the lead frame
FLAT WASHER	3	14	Flat washer AC tap
WSHR FLT .328-.625-	2	16	External positive post flat washer
WSHR LCK 5/16 MD SPT	5	17	Positive & Negative post lock washer
NUT 5/16-24X9/16X7/32	3	18	Positive post nuts
NUT,M8	3	18	Positive post nuts
RING TERMINAL - 1/4	2	19	Male spade turn on terminals
SCREW, MACH. 10-24X.63	2	20	Attaches lead from terminals
BUSHING	2	22	Internal lead frame turn on leads
SCREW,MACH-10-24X.63	2	23	Used to attached turn on leads to rectifier.
NUT CON LOCK 10-24-1/8	11	24	3 stator to AC taps internal, 6 external AC taps, 2 internal behind regulator attaches AC turn on spades
SCR TPG 10-32X.62 1/4H	4	26	4 Used to mount regulator to rear housing
NUT CONL 1/4-28 3/16TK	2	29	External negative post nuts
NUT, M6	2	29	External negative post nuts
NUT 5/16-24	2	29	External negative post nuts
WSHR FLT .266-.562-	2	30	External negative post flat washer
WSHR FLT 5/16	2	30	External negative post flat washer 5/16
WSHR INSL 1/4.09THX3/4	1	31	External negative post insulator washer
WASHER,GPO-1 INSULATING	1	31	External negative post insulator washer
WASHER,GPO-1 INSULATING	1	31	External negative post insulator washer 5/16"
SCREW, TAP #8-32 X 5/8	2	32	Attaches black terminal block to rear housing
TERMINAL BLOCK	1	33	Internal junction point for regulator and field coil

Important: The information contained in this bulletin is intended for use by trained, professional technicians who have the proper tools, equipment, and training to perform the required maintenance described above. This information is NOT intended for 'do-it-yourselfers'; and you should not assume that this information applies to your equipment. If you have any questions regarding this information please visit our website at www.prestolite.com, or contact our technical service department at:

Date: JULY 7, 2017

Bulletin No: TSB-3001

Description	Qty.	Find No.	Where used
WSHR INSL 5/16 BOLT	1	34	External positive post insulator
WASHER,GPO-1 INSULATING	1	34	External positive post insulator
5/8-18NF-2B PULLEY LCK	1	38	Pulley Nut
WASHER FLAT	1	39	Pulley nut flat washer
KEY, WOODRUFF #8	1	40	Rotor Shaft at Pulley
COVER, W.SHIELD-BLP	1	41	External. Cover to protect field coil wires.
THRU-BOLT 1/4-20 2.75L	4	42	Through Bolts (External end frames)

Important: The information contained in this bulletin is intended for use by trained, professional technicians who have the proper tools, equipment, and training to perform the required maintenance described above. This information is NOT intended for 'do-it-yourselfers'; and you should not assume that this information applies to your equipment. If you have any questions regarding this information please visit our website at www.prestolite.com, or contact our technical service department at: